

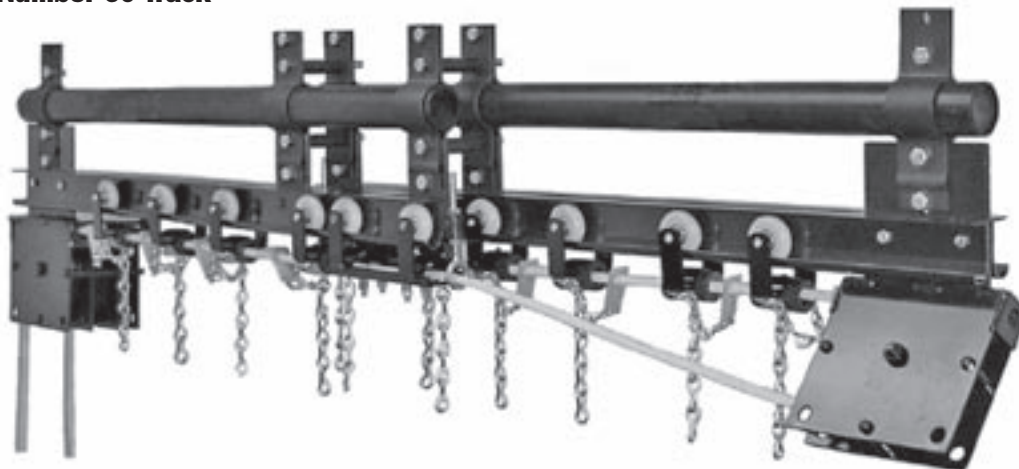
CONTINENTAL LINE NUMBER 60 TRACK



PRODUCT INFORMATION

Innovation | Dedication | Reliability | Safety

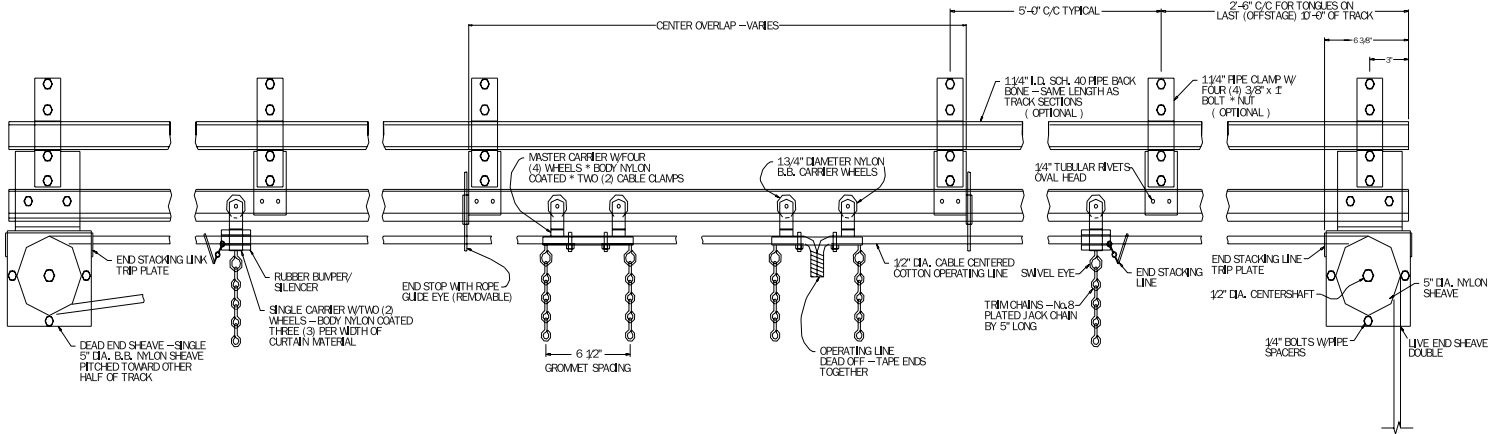
Number 60 Track



FEATURES

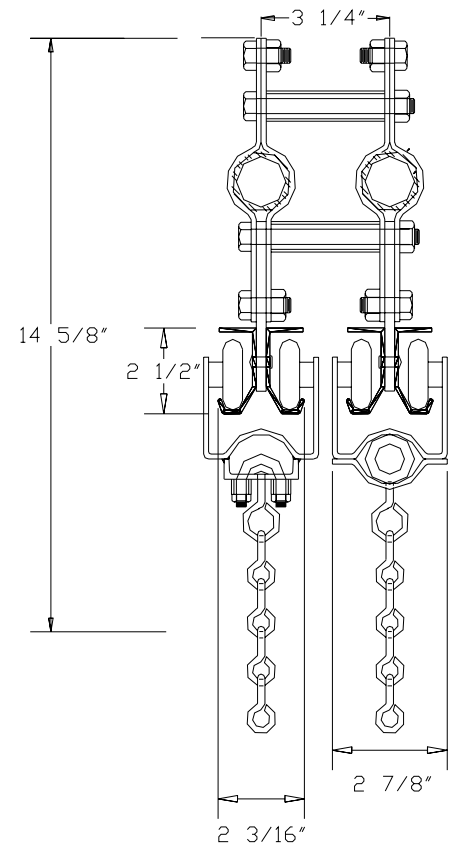
- The back to back open channel design allows for noise dispersion along the length of the track, resulting in a quiet performance.
- The 1.25" diameter schedule 40 pipe mounted to the top of the track creates a truss assembly capable of supporting greater loads than other tracks.
- The hollow "pass-through" design of the standard carrier keeps the operating line captive within the confines of the track during operation. This design also permits the use of rear folding (back packing) tabs, which let the carriers stack off stage, so the curtain travels as a smooth panel.
- The unique split wheel design of the carriers and master carriers helps to prevent binding of the carriers in the track channel, a problem associated with other types of tracks. The wheels have ball bearings and a nylon tread, which also adds to the quiet operation of the track. This ensures smooth performance and ease of operation.
- Typical uses of this track are for heavy stage drapes, adjustable walls and scenery. The uses of Continental Number 60 track are only limited by your imagination.
- Heavy steel carriers and track offer the highest loading capacities in the industry.
- Approximate maximum curtain weight per foot of track = 20 to 50 lbs./ft.
- Approximate drapery stacking per foot of track = 1.5 in/ft.

Track and Components



SPECIFICATIONS

Track shall be made from no lighter than 13 gauge (.095") steel with double parallel raceway. Track to have 1 1/4" standard black steel pipe backbone full length attached to track on approximately 5' 0" centers with die formed steel clamps. Single carriers shall be of two wheel construction and master carriers shall be of four wheel construction. Single carriers shall incorporate a resilient rubber tube silencer spacer with 1/4" wall thickness and an inside diameter of approximately 3/4" to allow free travel for full 1/2" diameter operating line. Carrier bodies shall be of steel construction and shall be plastic coated to reduce noise. Carrier wheels shall operate on individual ball-bearing assemblies for each wheel, and shall have nylon treads. The diameter of the carrier wheels shall be not less than 1 3/4". Carriers shall incorporate plated trim chains and rear-fold tabs. Operating line shall be No. 16 (1/2" diameter) with cable center. End sheaves and floor sheaves shall be 5" diameter and shall operate on ball bearings. Traveler tracks shall overlap a minimum of 3' 0" at center, and shall have suitable center stage sag pick-ups to remove sag from horizontal operating lines. Side plates of floor blocks shall be slotted to permit vertical adjustment of sheave to remove slack in operating line. Block shall be provided with locking handle to permit sheave adjustment without resort to tools, and vertical adjustment shall be a minimum of 6". Floor blocks shall incorporate a quick release mechanism with a positive action spring plunger locking device to prevent disengaging unless released. Floor plate to be countersunk for flat head screws. Key-hole sliding type connections are not acceptable. Continental number 60 track as fabricated by Tiffin Scenic Studios, Inc. Tiffin, Ohio.



Cross Section